

SuDS in Lambeth

Owen Davies
Sustainability Engineer
Environmental Services & Highways

June 2013



Lambeth

Population = 300,000 rising to 330,000+ 2025
Dwellings = an increase of 19% or 21,000 by 2025
Water demand rising to 9.8ml/day by 2025
98% Combined system @ 1:15 design
Sewage increasing by 158ml/day by 2025
14 Critical Drainage Areas (46,000 properties)
No natural watercourses
1 significant asset identified (27cm Albert Embankment)



So what could go wrong?

2 X Petitions - 2,500 against, 110 for
 Threat of High Court Challenge
 Committee 3 times in 5 months
 600+e-mails, 500+phone calls

50% of this traffic will turn right at the lights ahead, where the road narrows. The 'jam' is caused by Islington Council closing the two other right turn options - Bryantwood Road and Benwell Road - because Bryantwood Road had high traffic volumes !!!!
 You are angry so are the residents. Please lodge your complaints with:
 Owen Davies at Traffic and Safety!!! Islington Council.
 Phone. 0207 527 8650 Fax. 0207 527 2145
 also
 Tom Mackenzie at Islington Gazette, who is sympathetic.
 Phone. 0208 342 5777



So it's all doom & gloom?

Understanding competing needs
 Understand limits
 Mutual benefits
 Community Safety
 Perceptions
 Political buy-in

Partnership working in the Community

Highways services are improving our consultation process in areas that have been identified to have certain problems such as poor lighting and graffiti issues.

We are trying to involve all stakeholders in the planning stage of our schemes to ensure that we are meeting the needs of our customers by providing a quality service to our residents first time every time.

In instances where police or community groups have identified a risk to vulnerable residents, we have joined forces, to put in schemes that help to eliminate or reduce the affects of the risk.

We have recently put in a scheme at Fied White Walk, to reduce the presence of car crime, substance misuse, prostitution in conjunction with the community police, substance abuse groups and magpie.

Highways services will continue to work with our partners in the community to combat and champion your causes and issues, so we can make your living street of Islington a safer, cleaner and greener haven for everyone.

For further information, please contact Owen Davies, policy and strategy manager on 020 7527 3963.

This scheme implemented:

- a fencing perimeter on either side of the walk
- lighting to ensure good visibility and to make residence feel safe at night time
- cut back overgrown trees and foliage that was adding on to the path thus eliminating places that people can hide
- cut to deter any criminal activities
- visibility of community points in the area

The community police have indicated that there has been a marked reduction in criminal and anti social activities.



Highways Service

Islington Finalist for the National Transport Awards 2008

Islington's highways service, working in conjunction with residents, mobility forum, and other agencies is a finalist for the prestigious National Transport awards in the accessibility category.

The project submitted was the Heritage Crossover at York Way Court. The Heritage Crossover shows that through listening and understanding the needs of users, you can improve accessibility without compromising the conservation of the cobblestones. This crossover received an IHT award for Accessibility in 2007.

The innovative design has transformed a crossover to create an inclusive place that has become a symbol of community integration.

For further information please contact Owen Davies on ext. 3983 or e-mail owen.davies@islington.gov.uk.



Highways Service

Improving people's lives through access

Everyone has a right to a clear and safe passage on our highways without any obstacles impeding our journey. The council's highways service is responsible for providing accessible, safe and easy passage for all residents in Islington.

A scheme designed to improve accessibility has changed the lives of residents in Petherton Road.

Wheelchair users and vulnerable residents have recently benefited from an accessibility scheme, which has provided:



- access to local amenities
- slowed down traffic coming off green lanes through innovative good design
- improved streetscene

Jenni Hall the Petherton Road resident who raised this concern said:

"I'm very pleased that the council listened to our concerns by putting in the dropped kerbs and the smooth pavement. It has enabled me to get around in my wheelchair to local shops, mini supermarket and the bus stop independently. The council also took the opportunity to resurface the traffic island and plant new trees, which look great. Other residents have mentioned how much they appreciate the changes and how much better the road looks."

We want to encourage residents in Islington to have an equal say by actively giving them the opportunity to engage with us, to let us know their views and issues to help us make improvements which will change their lives.

For further information please contact Owen Davies on ext. 3983 or e-mail owen.davies@islington.gov.uk.

Before After



Lambeth Green Streets

Ardlui Road & Chatsworth Way
 Risk from Pluvial flooding
 Historical evidence in the area
 Low maintenance/re-instatement
 DIY Streets/Green Streets
 Community/Resilience
 Door to Door – Water efficiency





Lambeth Green Streets

Parking – Feb 2012 & 2013

Chatsworth 70% Most, 40% Lowest

Ardlui 27% Most, 10% Lowest

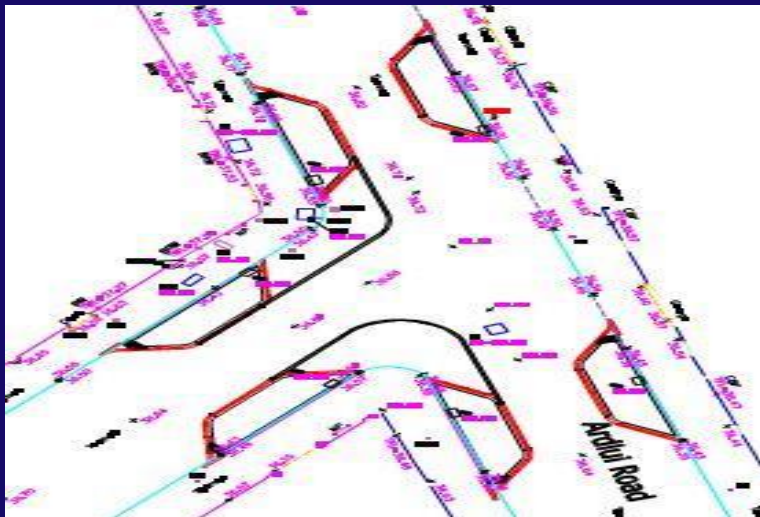
ATC – 20mph zone

85thile Ardlui 28mph

85thile Chatsworth 26mph



Rain Gardens



Modelled Outputs

Best Case

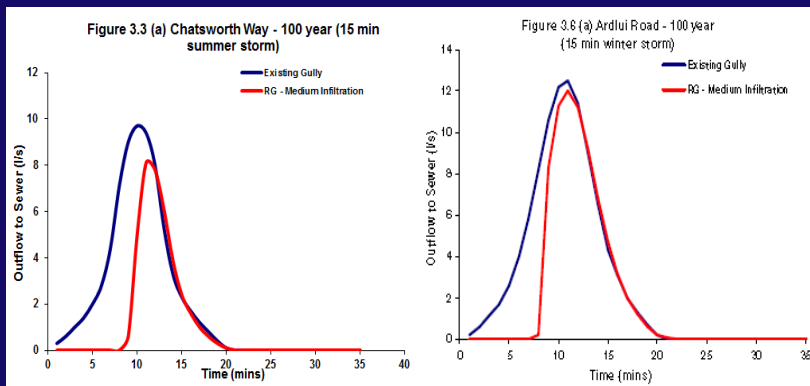
Chatsworth 1:100 (medium infiltration)
 15min 16% 1440min 36%

Worst Case

Ardlui 1:100 (medium infiltration)
 15min 4% 1440min 22%



Hydrograph's



Community Engagement 6-10-12



Community Engagement 10-11-12



Community Engagement 26-1-13



Community Engagement 16-3-13



Community engagement 11-5-13



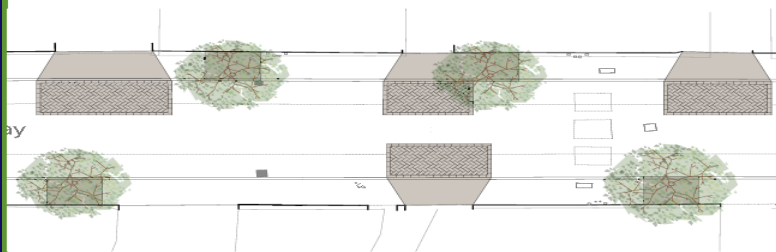
Not all straight lines



Not all Rain Gardens

Minimise parking loss on Chatsworth Way

We replaced all build outs with permeable paving in front of the driveways and permeable paving around the trees. This layout will reduce the parking loss on Chatsworth Way to only 2 spaces to accommodate the build outs at the junction with Idmiston Road.



Lambeth

Alley Way

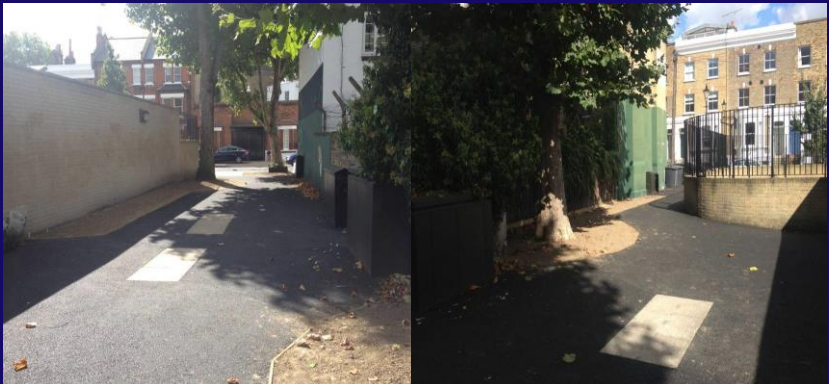
- Identified by residents
- Reinforced with a "Green Audit"
- Re-surfaced
- New planting areas
- School and residents planting
- They will maintain
- New space?

Lambeth

Alley Way Before



Alley Way After

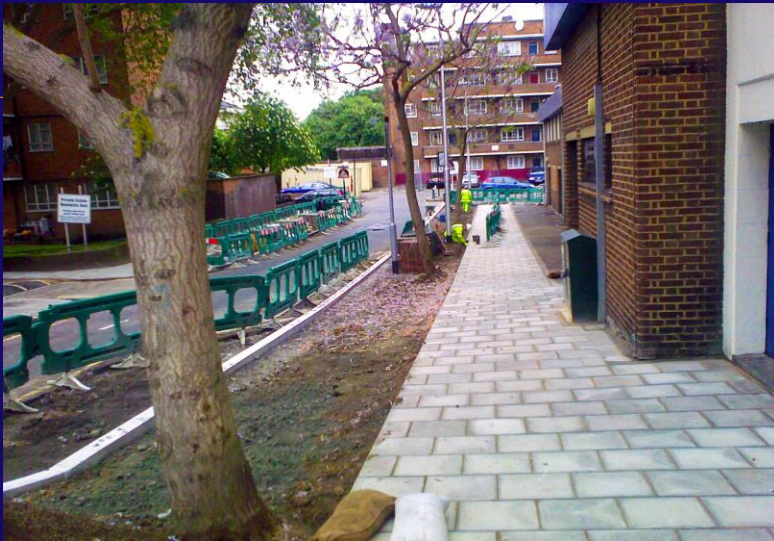


Bird Walk – Planting Day 10-11-12



Lambeth

Fount Street



Lambeth

Thorparch Road



Lambeth

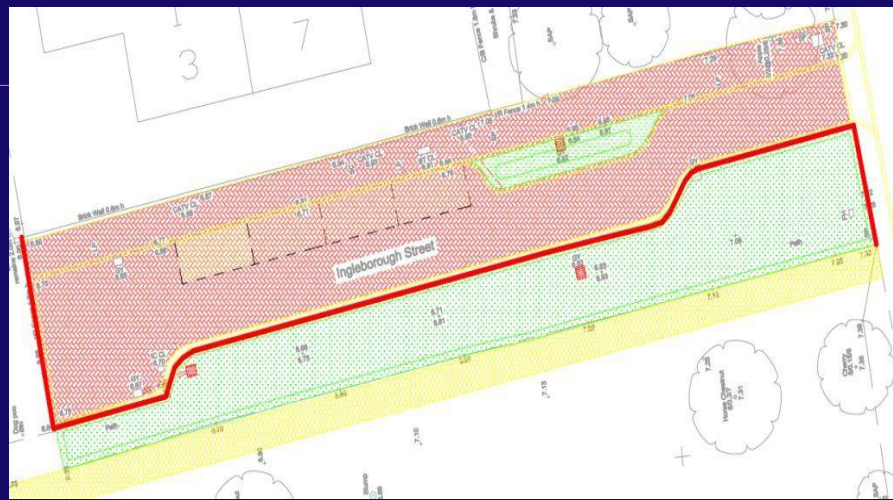
Ingleborough Street

“forgotten” highway
Serves 4 properties
In a middle of a park
Forrest of bollards
Dead Space

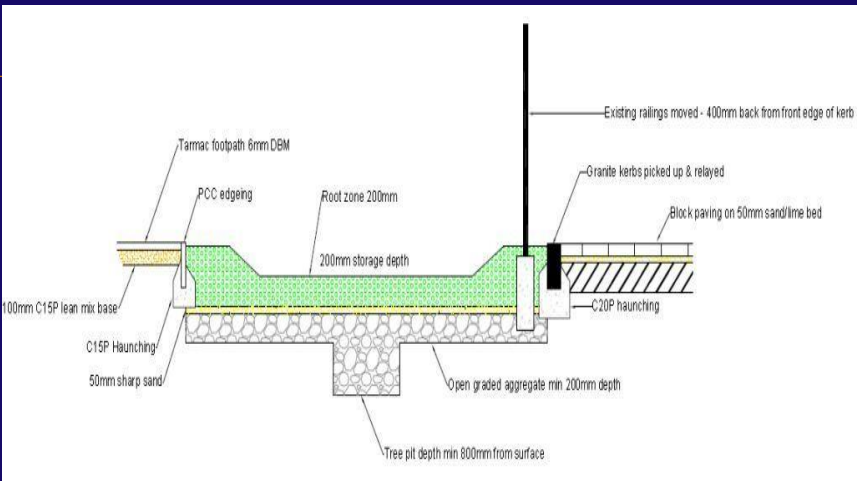


Lambeth

Ingleborough Street



Section



Depave

Two front gardens – 22nd September 2012

Advertised on Project Dirt

We supplied

- Materials (Soil, pea shingle)

- Tools (picks, shovels)

- Gang to help and show what to look for

- Removal of spoil

Two gardens four hours – removed 40% hard surface

Enabled residents – Skills & Resources

Community Freshview/Groups of residents



Depave



Ashmole Estate



Mawbey Estate



Tradescant Road



Green Roofs

- Training for 25 residents
- Small scale green roofs
- One of the tools for Surface Water Management not the answer
- Multiple benefits
- Fun day
- Will be repeated, budget agreed



Green Roof's

Urban Wild Project

Garages

Regent Road

Vauxhall Walk

Largest Green roof in Europe(?) – Ethelred Estate



Urban Wild Project

Resident led

Businesses benefit

Community benefits

Bio-diversity

Urban Heat Island

Visual impact

Food Production

Resilience

Event 9th June 2013



LFRMS Residents Survey

Survey ran for 6 weeks
Help inform the development of LFRMS

Overall

96% residents support Depave
86% residents support Highway Rain Gardens
90% residents support new grass verges
96% residents support green roofs



LFRMS Comments

"A step by step guide to give a hierarchy of most beneficial ways to achieve reduction , in terms of no-brainer, quick wins, weekend job, longer term"

"Availability of general information and with encouragement and enabling of establishment of rain gardens in public and private spaces with information on site describing there function"

"green rooves, green car parks, front driveways made from porous materials - can we get a subsidy to convert ours?"

"AFTER ALL THIS IS NATURES WAY OF REDUCING FLOODING. IT SHOULD BE A LEGAL REQUIREMENT "



Owen Davies
Sustainability Engineer
Environmental Services & Highways
odavies@lambeth.gov.uk
07850 22 33 09

